

Installation instructions for Addbutment dental scan libraries

1 Introduction

This manual will explain how to obtain and install the Addbutment libraries in 3Shape Dental System.

2 Obtaining the libraries

The library will initially be supplied directly from Addbutment .

3 Installation

3.1 3Shape Dental System

Start by opening the 3Shape Dental System Control Panel application and choose Import/Export, see Figure 1.

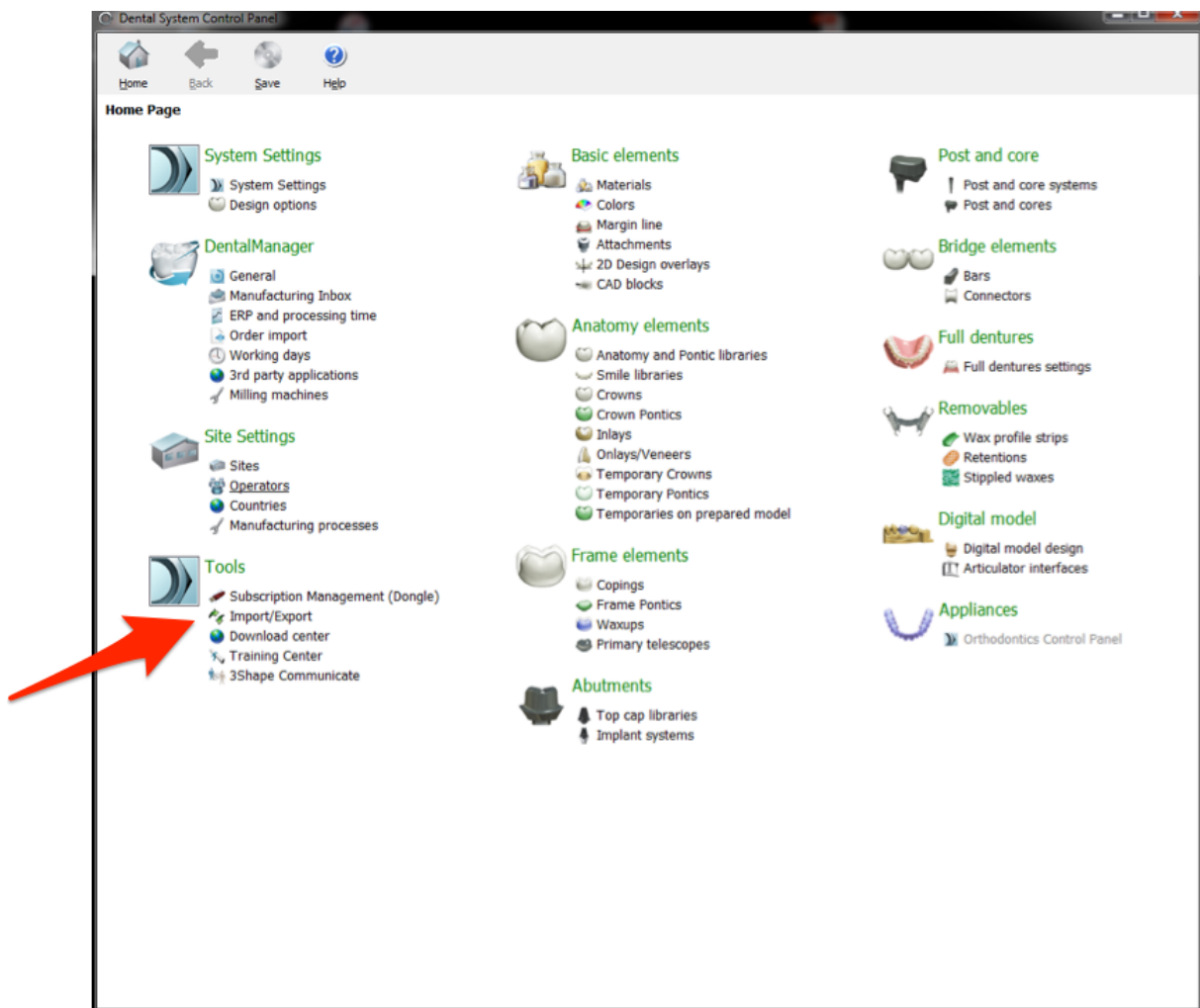


Figure 1: 3Shape Dental System Control Panel main window.

Choose import materials and browse to the downloaded (.dme) file, see Figure 2.

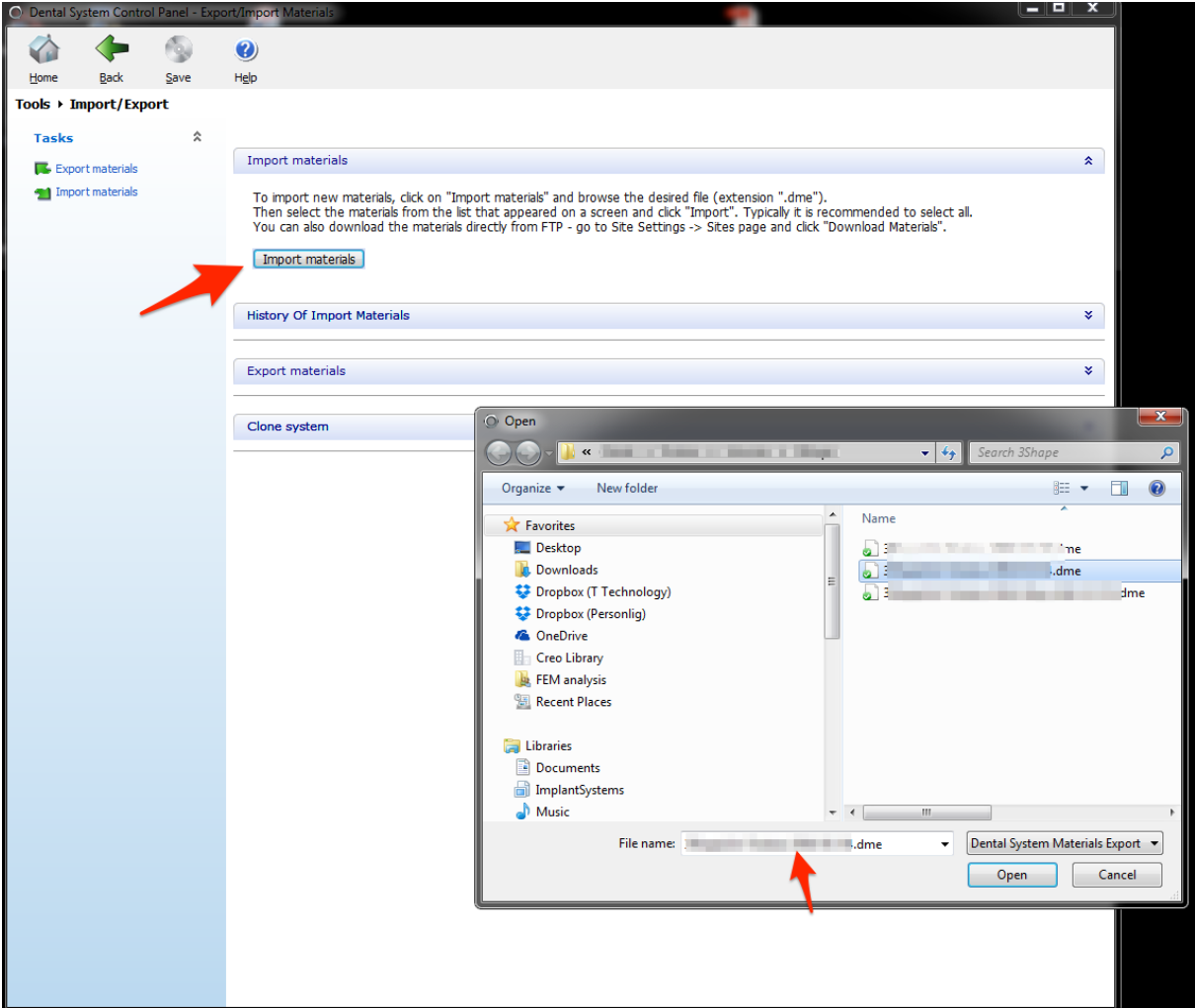


Figure 2: 3Shape Dental System Control Panel import menu.

Choose import to import the implant systems as shown in Figure 3.

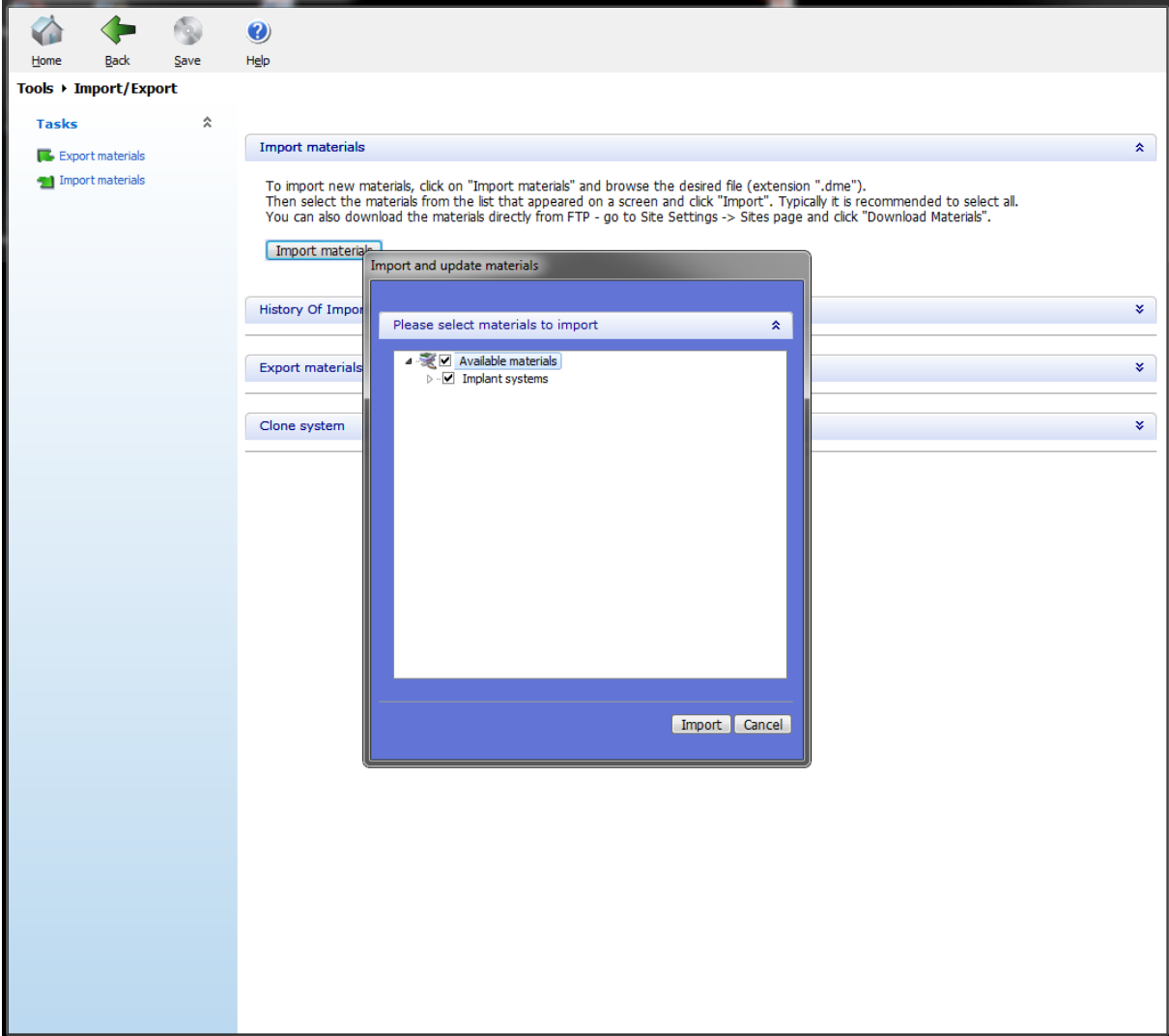


Figure 3: 3Shape Dental System Control Panel Import

Save changes before exiting.